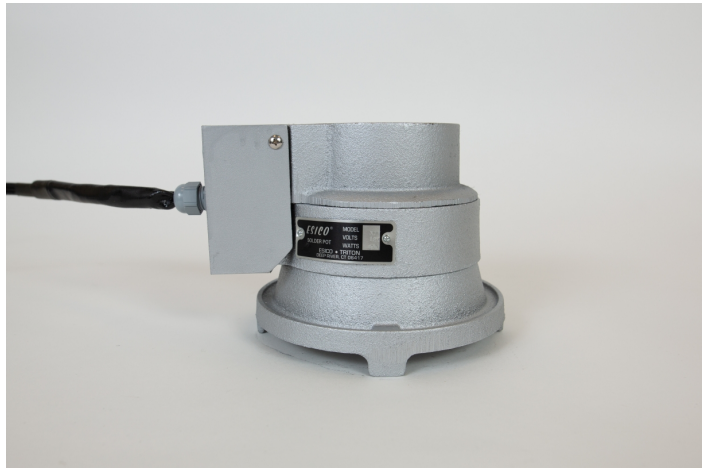


# Model: 37T

## THE VARIABLE HALF-WAY HOUSE

Dip soldering or tinning of larger parts or when more heat is needed. It takes approximately 4 bars of our CS-PBF4 to fill our Variable Half-way House Solder pot.



### TECHNICAL SPECIFICATIONS

RoHS Compliant	Yes
Wattage	650 watts
Maximum Temperature	650 °F / 343°C
Solder Bath Depth	1.75 in / 4.45 cm
Solder Bath Diameter	3.5 in / 8.89 cm
Country of Origin	US
Net Volume	Approx. 9 oz
Package Dimensions (Inches)	10 x 10 x 10
Package Weight	9 lbs / 4.08 kg

### FEATURES AND BENEFITS

### REPLACEMENT PARTS

The following products can be used as replacements for Model 37T featured on this page:

Model	Product Name
PC12T75T	Replacement Solder Pot Cordset
PE37-70-75	Replacement Solder Pot Element