

# Model: 37

## THE HALF-WAY HOUSE

Esico Triton electric solder pots are made in a wide range of models. Whatever the requirements, tinning, stripping, dip soldering etc. these solder pots will do the job efficiently. they are designed and engineered for todays continuous production requirements. The cast iron crucibles are designed for convenience, safety and high volume production.

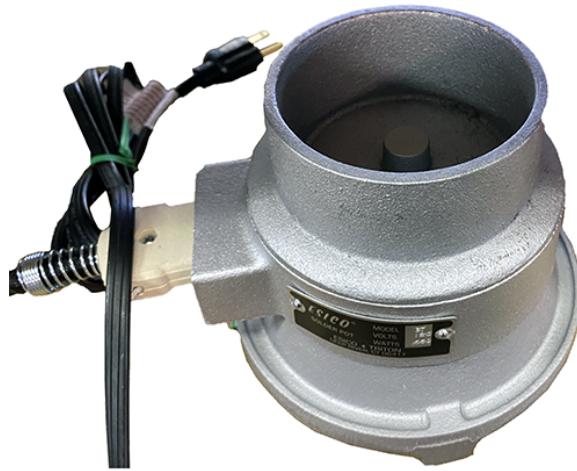
Choose the Model 37 if you're looking for a pot between the OG (36) and the Big Boy (70). Dip soldering or tinning of larger parts or when more heat is needed.

It takes approximately 4 bars of our CS-PBF4 to fill our Variable Half-way House Solder pot.

### ACCESSORIES

The following products can be used as Accessories for Model 37 featured on this page:

Model	Product Name
EC-6	ESICO-ntrol



### FEATURES AND BENEFITS

**Just The Right Size ... This 5 Pound Capacity Solder Pot** was developed to meet the needs of higher volume production, general solder dipping, wire tinning or similar applications.

This solder pot can be easily maintained by qualified service personnel. The modular design allows for quick replacement of expired heating elements.

The detachable cord-set can be easily replaced as needed.

**Grey Cast iron crucible** is chemically stable and highly resistant to the corrosive nature of soldering with higher tin contents, making this pot perfectly suitable for Lead-Free Soldering.

### REPLACEMENT PARTS

The following products can be used as replacements for Model 37 featured on this page:

Model	Product Name
PC1275	Replacement Solder Pot Cordset
PE37-70-75	Replacement Solder Pot Element

## TECHNICAL SPECIFICATIONS

Maximum Temperature	800 °F / 427°C
Wattage	650 watts
Available in a 220-240 VAC?	Yes, available upon request
Net Volume	Approx. 9 oz
Solder Bath Depth	1.75 in / 4.45 cm
Solder Bath Diameter	3.5 in / 8.89 cm
Product Weight	7 1/4 lbs
Package Dimensions (Inches)	10 x 10 x 10
Package Weight	9 lbs / 4.08 kg
Country of Origin	US
Cage Code	02105
Harmonization Code:	8515.11.0000
RoHS Compliant	Yes
WEEE Compliant	Yes
Warranty Policy	Details
User Manual	User Manual

## END-OF-LIFE INSTRUCTIONS

In an effort to reduce waste and comply with WEEE directive, please do not dispose of product. All American Beauty Tools are serviceable and can be repaired and/or replaced. Please contact manufacturer to make arrangements.

## SIMILAR PRODUCTS

The following products are related (similar model but different specifications, etc.) to Model 37 featured on this page:

Model	Product Name
600	Mid Capacity Solder Pot
D-600	Mid-Capacity Digital Solder Pot
PD33	Mid-Capacity Digital Solder Pot