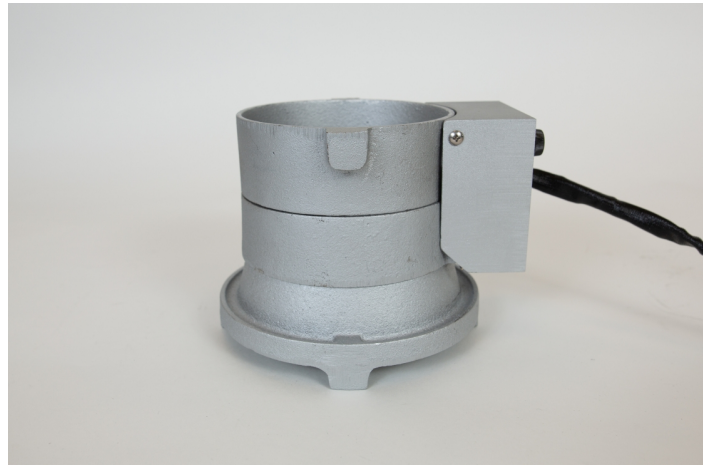


Model: 70T

THE VARIABLE BIG BOY

Dip soldering or tinning of larger parts or when more heat is needed. It takes approximately 8 bars of our CS-PBF4 to fill our Variable Big Boy Solder pot.



TECHNICAL SPECIFICATIONS

RoHS Compliant	Yes
Wattage	650 watts
Maximum Temperature	650 °F / 343°C
Solder Bath Depth	1.75 in / 4.45 cm
Solder Bath Diameter	4.75 in / 12.07 cm
Country of Origin	US
Net Volume	Approx. 17 oz
Package Dimensions (Inches)	10 x 10 x 10
Package Weight	11 lbs / 4.99 kg

FEATURES AND BENEFITS

REPLACEMENT PARTS

The following products can be used as replacements for Model 70T featured on this page:

Model	Product Name
PC12T75T	Replacement Solder Pot Cordset
PE37-70-75	Replacement Solder Pot Element
PT1280	Replacement Thermostat