

# Model: 75

## THE BRICK HOUSE

Esico Triton electric solder pots are made in a wide range of models. Whatever the requirements, tinning, stripping, dip soldering etc. these solder pots will do the job efficiently. they are designed and engineered for todays continuous production requirements. The cast iron crucibles are designed for convenience, safety and high volume production.

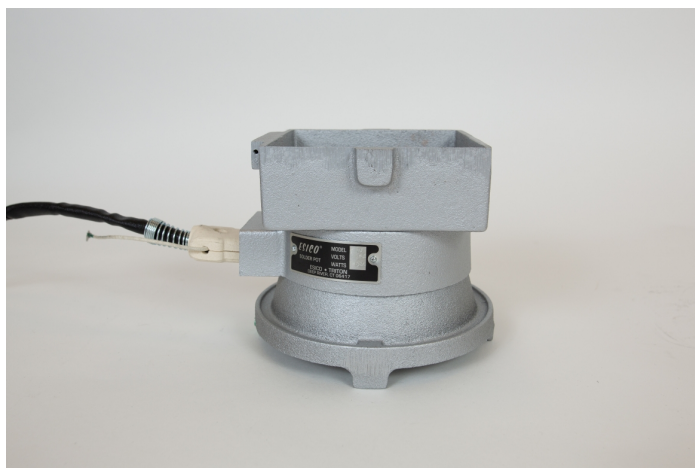
This Large capacity, deep well is good for long parts and for short run soldering and desoldering of through-hole printed circuit boards, as well as a variety of other applications.

It takes approximately 8 bars of our CS-PBF4 to fill our Variable Brick House Solder pot.

### ACCESSORIES

The following products can be used as Accessories for Model 75 featured on this page:

Model	Product Name
EC-6	ESICO-ntrol



### FEATURES AND BENEFITS

**Just The Right Size ... This 11-3/4 Pound Capacity Solder Pot** was developed to meet the needs of higher volume production, larger solder dipping, heavy gauge wire tinning or similar applications.

This solder pot can be easily maintained by qualified service personnel. The modular design allows for quick replacement of expired heating elements.

The detachable cord-set can be easily replaced as needed.

**Grey Cast iron crucible** is chemically stable and highly resistant to the corrosive nature of soldering with higher tin contents, making this pot perfectly suitable for Lead-Free Soldering.

### REPLACEMENT PARTS

The following products can be used as replacements for Model 75 featured on this page:

Model	Product Name
PC1275	Replacement Solder Pot Cordset
PE37-70-75	Replacement Solder Pot Element

## TECHNICAL SPECIFICATIONS

Maximum Temperature	750 °F / 399°C
Wattage	650 watts
Available in a 220-240 VAC?	Yes, available upon request
Net Volume	Approx. 20 oz
Solder Bath Depth	1.75 in / 4.45 cm
Solder Bath Diameter	4-3/4" x 4-3/4" in
Product Weight	8 lbs / 3.63 kg
Package Dimensions (Inches)	10 x 10 x 10
Package Weight	10 lbs / 4.54 kg
Country of Origin	US
Cage Code	02105
Harmonization Code:	8515.11.0000
RoHS Compliant	Yes
WEEE Compliant	Yes
Warranty Policy	Details
User Manual	User Manual

## END-OF-LIFE INSTRUCTIONS

In an effort to reduce waste and comply with WEEE directive, please do not dispose of product. All American Beauty Tools are serviceable and can be repaired and/or replaced. Please contact manufacturer to make arrangements.

## SIMILAR PRODUCTS

The following products are related (similar model but different specifications, etc.) to Model 75 featured on this page:

Model	Product Name
75-LF	The Lead-Free Brick House
D-900	Large Deep-well Digital Solder Pot
PD74	Deep Well Digital Solder Pot